

IRISS®

Infra Red Inspection Support Solutions



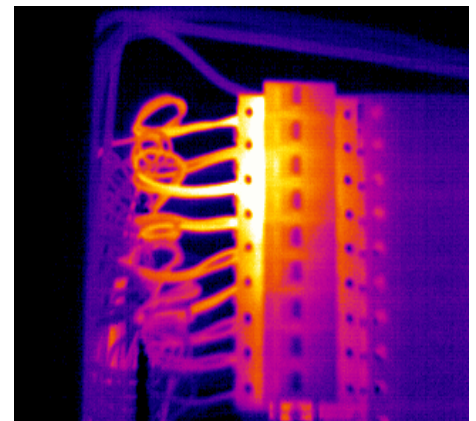
Marine Thermography

An infra red inspection is the same whether it is on a ship at sea, a ship in port or in a building. The main difference is that if a critical component fails within a building it can be replaced relatively simply, this is not the case when at sea and we need to make sure that the electrical systems are in A1 condition before the ship leaves port. We also need to be able to inspect these systems regularly at sea during their day to day operations to find and rectify any developing faults before a breakdown occurs.

Electrical systems are amongst the most critical areas on board ship.

There are considerable benefits to be gained by protecting these systems from unplanned stoppages or in the worst case fire. Insurance statistics reveal that loose connections cause 25% of all failures to switchboards, switches, circuit breakers and cables. Thermography highlights poor connections immediately and can also verify at once if corrective measures have been successful.

An important consideration whilst completing IR inspections at sea is that a ship pitches and rolls and as such is not a stable platform to work from. This is an extremely hazardous environment and full precautions must be taken. Electrical cabinets should not be opened when energised and GM Tech will recommend and fit IRISS® infrared inspection windows to ensure stability of your electrical installations, safety of personnel and effective thermographic inspections on fully energised equipment.



Find loose or corroded connections

IRISS® Infra Red Inspection Windows.

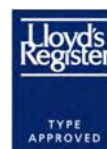
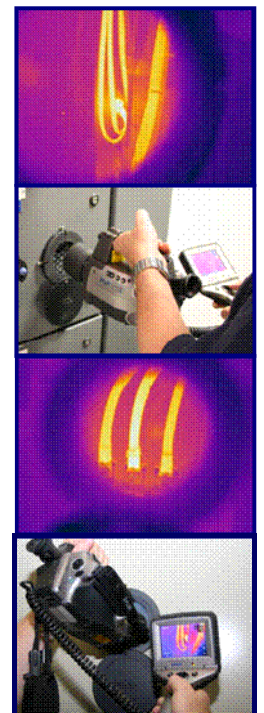
The main restriction to any infra red inspection is safe access to the energised components that you wish to inspect. The IRISS® infra red window is the most robust system available on the market today and was the first infra red window in the world to be awarded Lloyds Type approval and the first lens assembly (IR1) to pass the impact, load and flammability standards laid down in IEEE C.37.20.2 and UL746 C.

The patented IR1 and IR2 lens assemblies are waterproof, resistant to light acids and alkalis, and are unaffected by long term vibration. This makes the IRISS® VPFR range of IR windows the most suitable product in its class available for the marine industry today.

IRISS® IR windows can be easily fitted into existing electrical panels and have a fitting time of approximately 10 minutes. They are IP 65 rated at all times and are available in 4 sizes:

- VPFR-100: 4 inch Viewing Diameter**
- VPFR-75: 3 inch Viewing Diameter**
- VPFR-50: 2 inch Viewing Diameter**
- VP-12 : 5/16 inch Viewing Diameter**

There are some occasions when a standard IR window is not suitable, therefore we also manufacture custom viewing panels using our IR2 lens assembly. More details on these can be found on our website.



Web: www.iriss.com |

Tel: +1 941-373-1528

| Email: info@iriss.com