

IRISS®

Infra Red Inspection Support Solutions



Data Centre Case Study

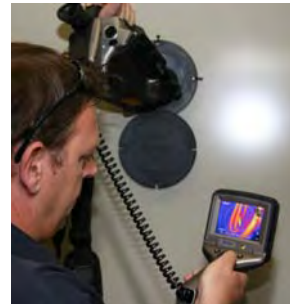
GM Tech has been providing predictive maintenance services to major city investment banks throughout the City of London for several years and has evolved into a full **risk assessment and management service** that is a fundamental part of the overall facilities maintenance package provided by the Facilities Maintenance contractor.

They started by providing thermography services but access to important bolted connections was often restricted by an inability to open cabinet doors and internal Perspex protectors. This meant that thermal imaging was of limited value and if left to maintenance shut down days when there was little or no load on the system then the data collected was of no real value at all.

The brief from the client was simple, they required that all of the plant and power distribution systems associated with the data centre were to be modified to allow inspections to be completed at any time with no interruption to process and under the load conditions that the plant was actually experiencing!!!

GM Tech recommended the fitting of IRISS® infrared inspection windows and modified covers on the plant and power distribution systems to allow all bolted and cable connections to be inspected. This meant that all the distribution board covers were modified and IR windows fitted into the plant and switchgear. This included the following areas:

- **UPS (Uninterruptable Power Sources)**
- **ATS (Automatic Transfer Switches)**
- **Main Switchgear Systems**
- **Computer and Server Systems**
- **Generator Systems**
- **Battery Systems**
- **Cooling Systems**
- **Utility Systems**
- **Riser Systems**



They also included a data management system to control the data and trend analysis of all IR data and put in place a bar code system which identified each individual inspection point and allowed the historical data to be recalled on a PDA for immediate analysis of the data that was gathered.



Modified PDU



Modified LV Switchgear

Now all thermal imaging can be completed on fully energised systems at any time and without the requirement to be accompanied. This proved to be so successful that in addition to being retained for quarterly thermal imaging surveys, GM Tech supplied a low cost thermal imager and trained staff from the FM contractor so that thermal imaging could be undertaken at any time when a problem was suspected.

Web: www.iriss.com |

Tel: +1 941-373-1528

| Email: info@iriss.com